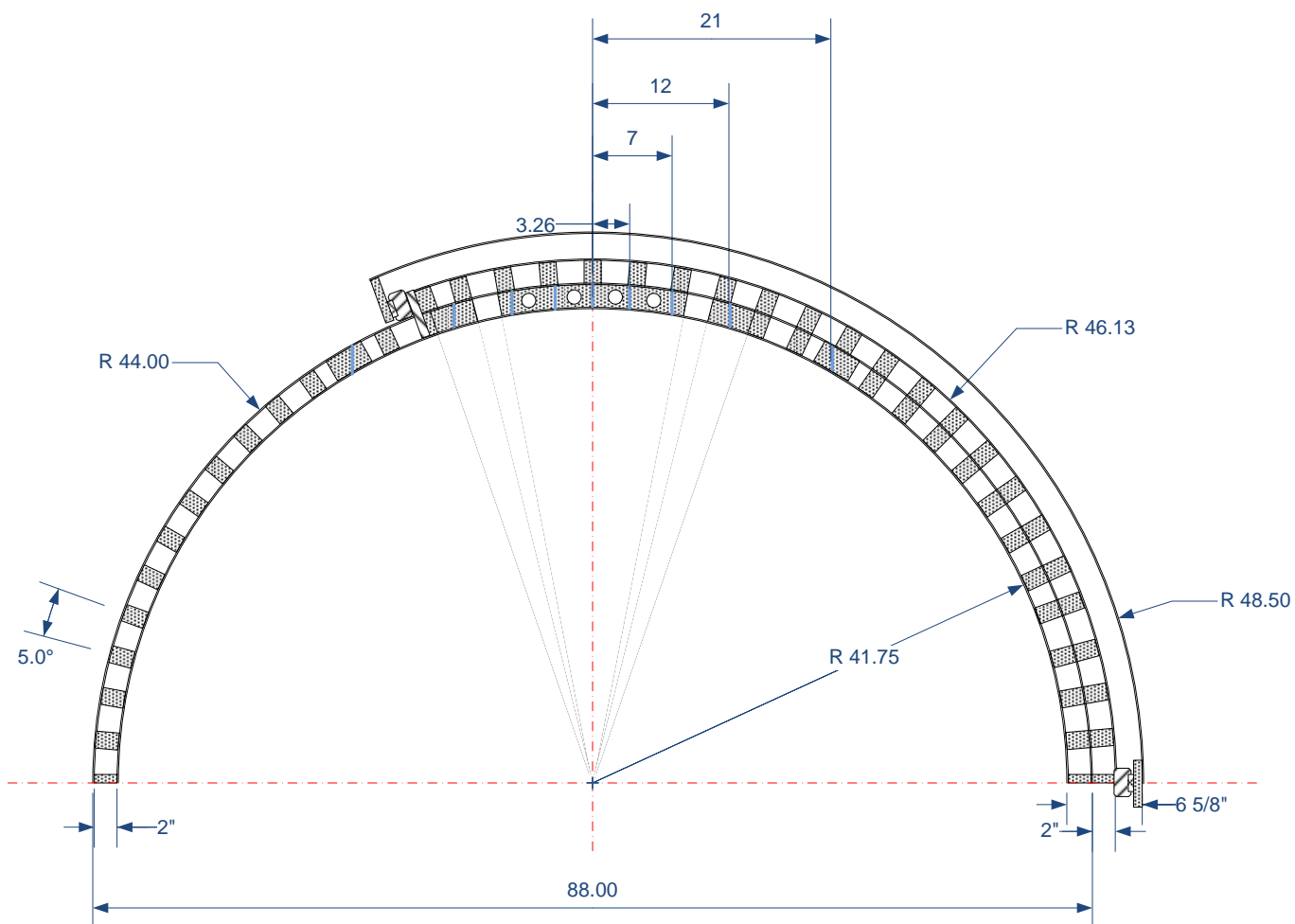
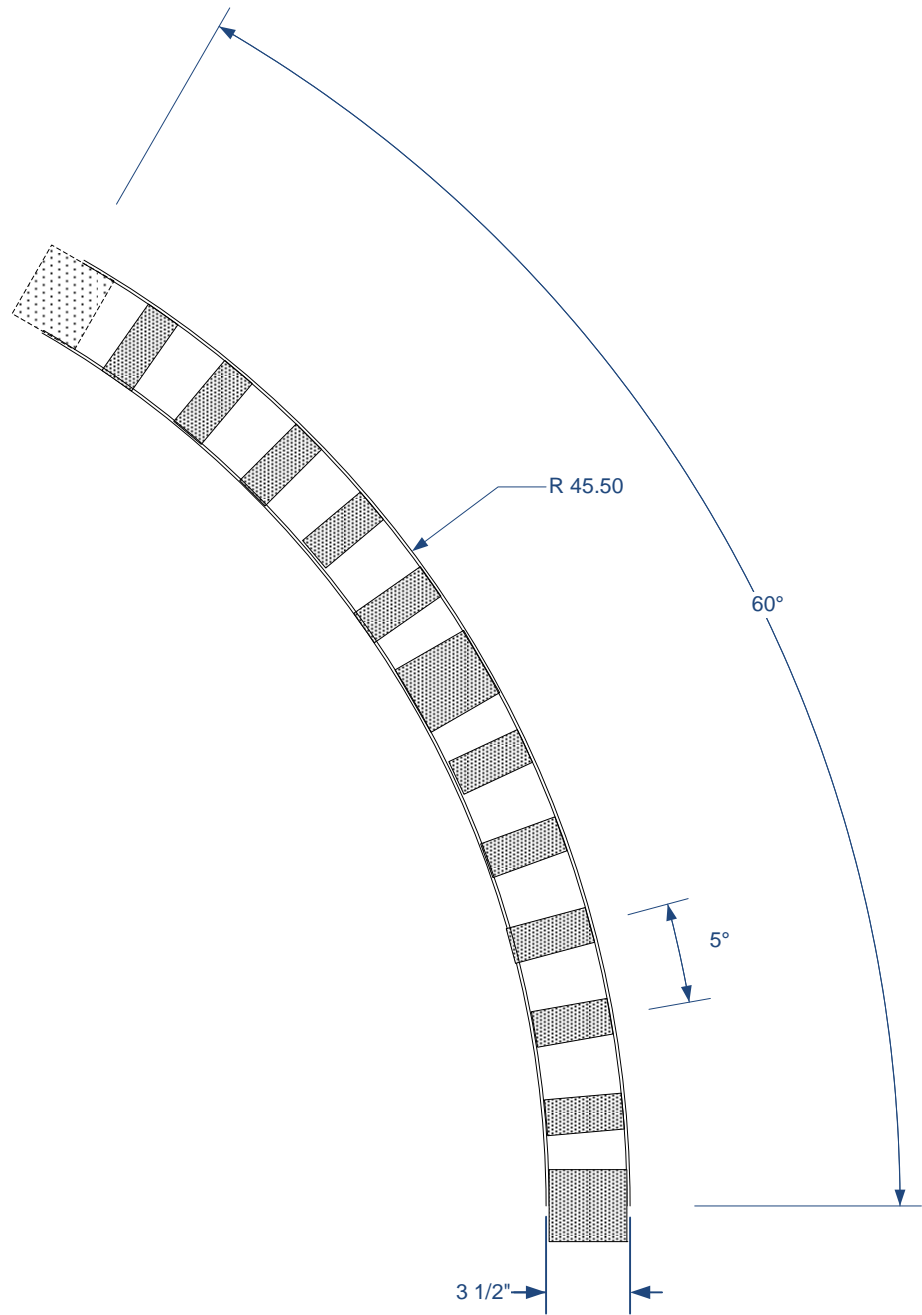


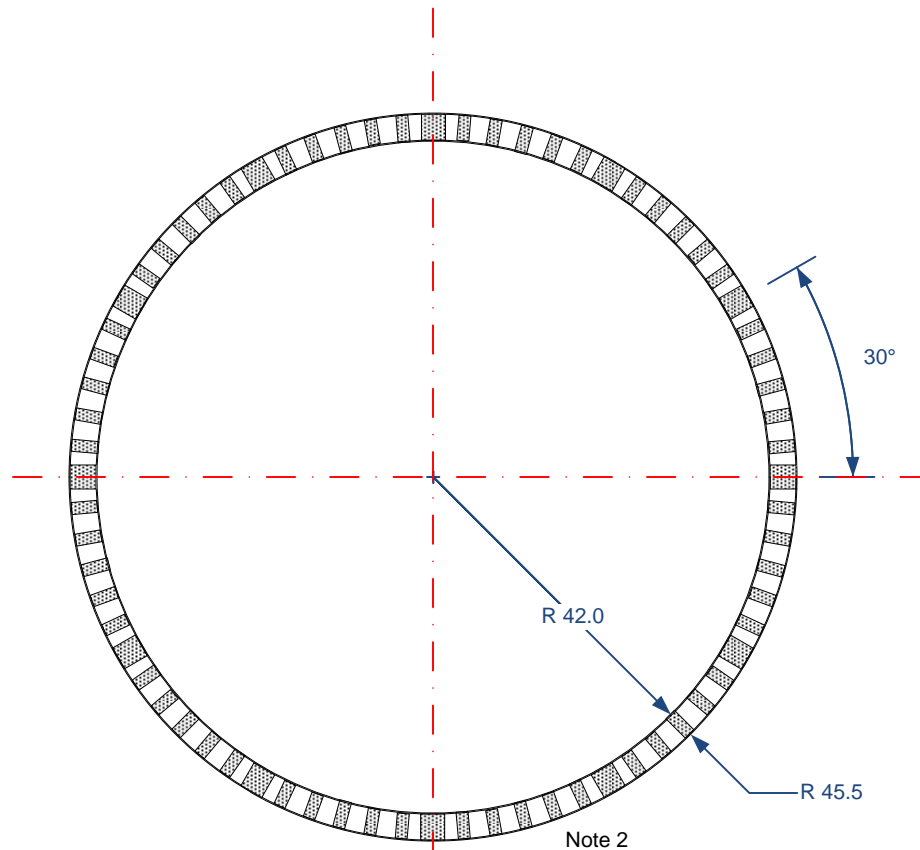
TITLE			
OBSERVATORY DOME - MK II			
Dome Overall View			
DRAWN BY			
CHARLES W. BAETSEN			
SIZE	DWG NO		REV
D	OBS-01		1
SCALE	1 : 16	1 Oct, 2014	SHEET 1 OF 10



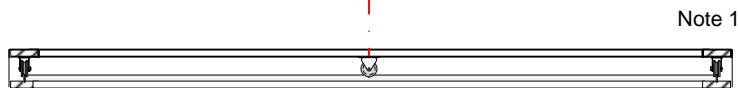
TITLE			
OBSERVATORY DOME - MK II			
Center Support			
DRAWN BY			
CHARLES W. BAETSEN			
SIZE	DWG NO		REV
D	OBS-01		1
SCALE	1 : 16	1 Oct, 2014	SHEET 3 OF 10



TITLE			
OBSERVATORY DOME - MK II			
Dome Base Ring Sections			
DRAWN BY			
CHARLES W. BAETSEN			
SIZE	DWG NO		REV
D	OBS-01		1
SCALE	1 : 8	1 Oct, 2014	SHEET 4 OF 10



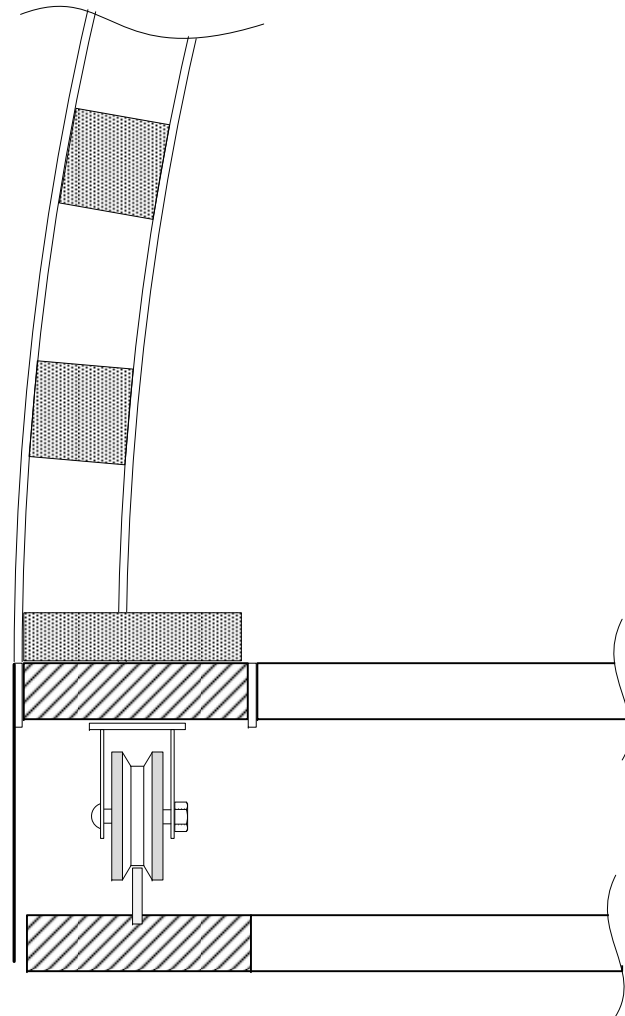
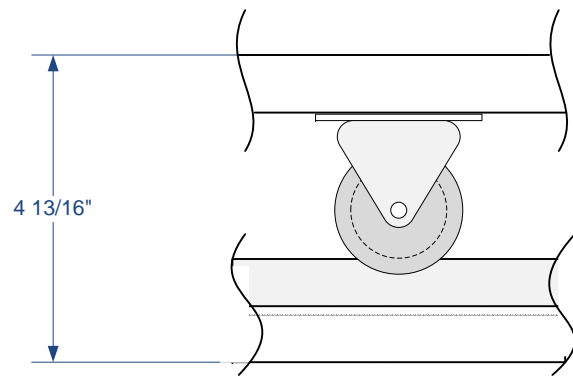
Plan View



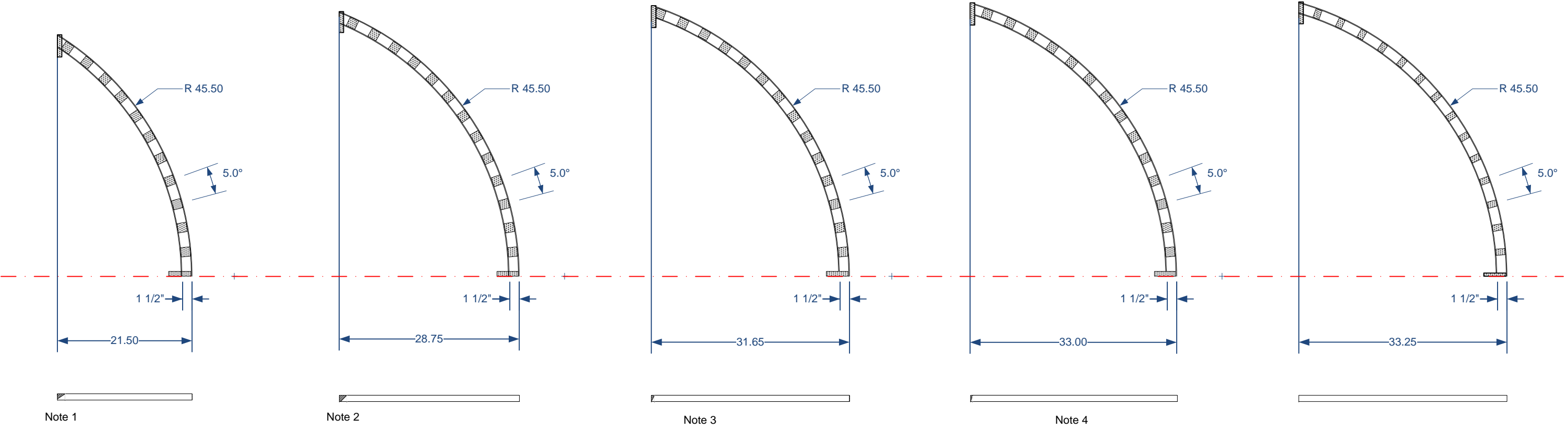
Side View

Note 1 – See sheet 6 for roller and track detail
 Note 2 – See sheet 4 for ring base section detail.

TITLE				
OBSERVATORY DOME - MK II				
Dome Base Ring				
DRAWN BY				
CHARLES W. BAETSEN				
SIZE	DWG NO			REV
D	OBS-01			1
SCALE	1 : 24	1 Oct, 2014	SHEET	5 OF 10



	Observatory Dome - MK II			
	Roller Detail			
	SIZE	FSCM NO	DWG NO	REV
			OBS-01	1
	SCALE	1 : 3	10/1/2014	SHEET 6 OF 10



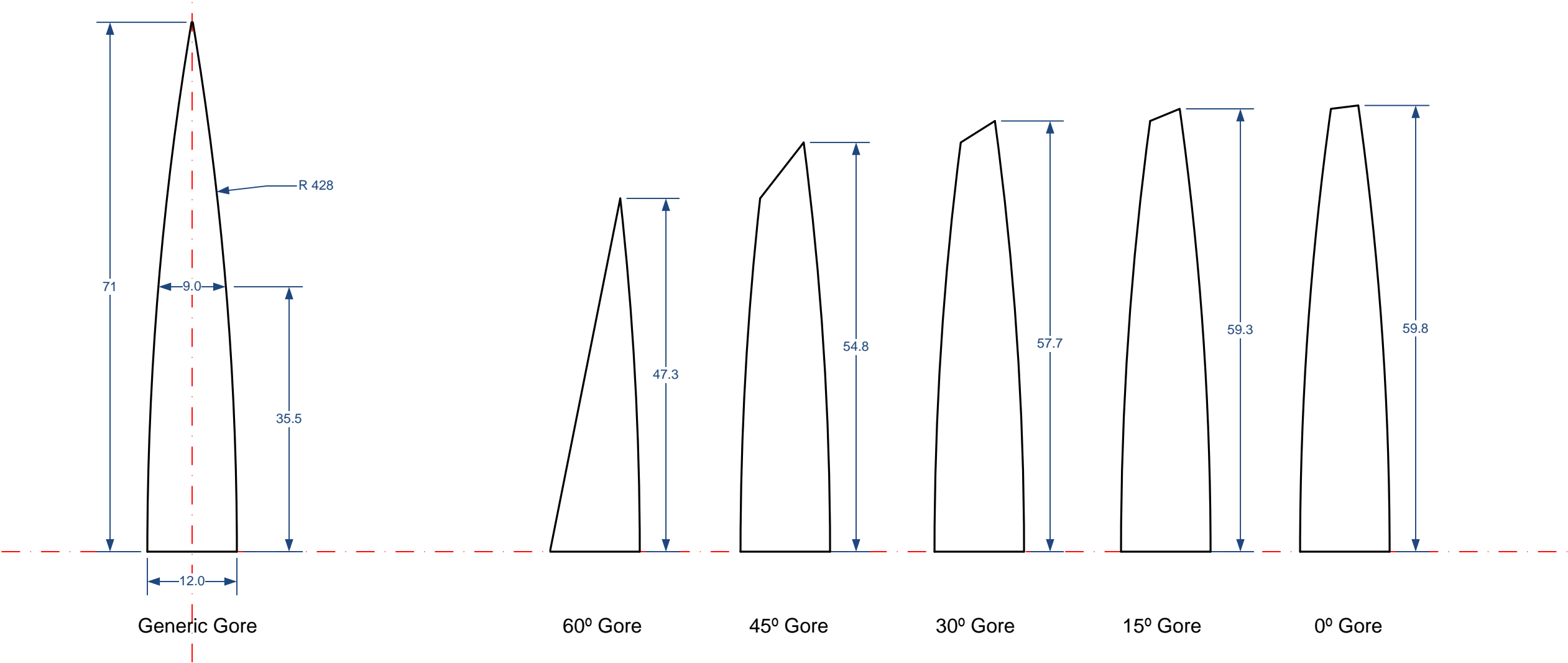
Item	# Needed	# Blocks	Arc Length
60° Rib	4	11	46.1
45° Rib	4	13	53.9"
30° Rib	4	14	57.3"
15° Rib	4	14	58.7"
0° Rib	2	14	59.3"

Note 1 – Sand end at 60-deg angle to mate with centre support (QTY 2 on left. QTY 2 on right)
Note 2 – Sand end at 45-deg angle to mate with centre support (QTY 2 on left. QTY 2 on right)
Note 3 – Sand end at 30-deg angle to mate with centre support (QTY 2 on left. QTY 2 on right)
Note 4 – Sand end at 15-deg angle to mate with centre support (QTY 2 on left. QTY 2 on right)

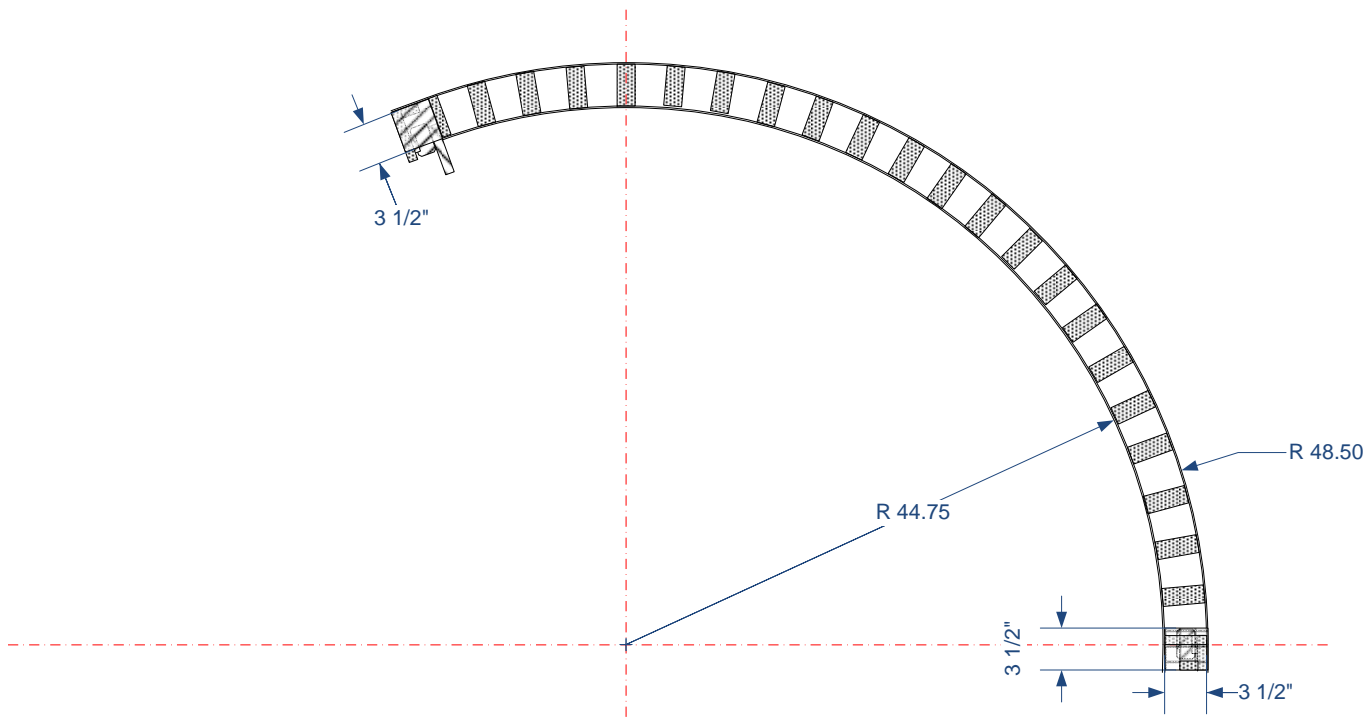
TITLE			
OBSERVATORY DOME - MK II			
Rib Detail			
DRAWN BY			
CHARLES W. BAETSEN			
SIZE	DWG NO		REV
D	OBS-01		1
SCALE	1 : 16	1 Oct, 2014	SHEET 7 OF 10

Notes:
4 each needed (2 in this orientation, and 2 in the L-R mirror image orientation)
Materials: Aluminum flashing or suitable flat vinyl siding (at least 12" wide and 60" long)

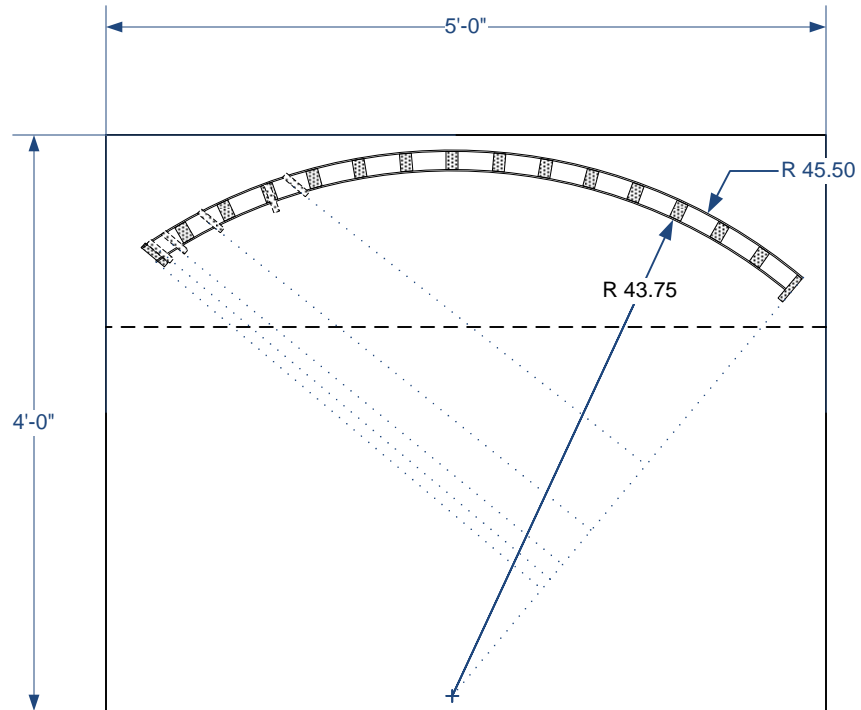
NOTE: Best way to lay these out is make a template by holding a large piece of thin cardboard against the ribs and tracing out the outline. Then add ½ the rib thickness to all sides.



TITLE			
OBSERVATORY DOME - MK II			
Gores			
DRAWN BY			
CHARLES W. BAETSEN			
SIZE	DWG NO		REV
D	OBS-01		1
SCALE	1 : 16	1 Oct, 2014	SHEET 8 OF 10



TITLE			
OBSERVATORY DOME - MK II			
Shutter Sides			
DRAWN BY			
CHARLES W. BAETSEN			
SIZE	DWG NO		REV
D	OBS-01		1
SCALE	1 : 16	1 Oct, 2014	SHEET 9 OF 10



TITLE			
OBSERVATORY DOME - MK II			
Rib Jig			
DRAWN BY			
CHARLES W. BAETSEN			
SIZE	DWG NO		REV
D	OBS-01		1
SCALE	1 : 16	1 Oct, 2014	SHEET 10 OF 10